

# STORAGE, TRANSPORTATION, HANDLING MANUAL

D0161.STHM.01

MAIN TERMINAL BOXES OF  
MV GENERATORS

for rated voltages of 3kV up to 25 kV

TYPE **GMTB, GN,  
GMTB&N**

ISO 9001:2016  
ISO 14001:2016  
OHSAS 18001:2008

**ivep**<sup>®</sup>

## STORAGE

The standard packaging of the switchgear cabinets is to protect the switchgear components from damage, but also the surface layer of contacts from oxidation. It is not allowed to store the switchgear cabinets in outdoor environment.

Indoor climatic conditions

Ambient storage temperature during the storage -10 to +50°C

Humidity max.75%

## STANDARD PACKAGING AND TRANSPORT REGULATIONS

According to the various arrangements the switchgear cabinets are either placed on wooden pallets or directly on the cabinet's own steel frames, which in this case are not dismantled. The switchgear cabinets cannot be stacked. They are packed in plastic film with corner reinforcements. Sometimes, which applies for seaworthy packing, the cabinets are placed in wooden crates or boxes.



**Wooden crate, wooden box**

**NOTE:**

**IT IS NOT ALLOWED TO TILT THE PACKAGES OR TO TURN THEM UPSIDE DOWN!! ALL THE OTHER CONDITIONS ARE GOVERNED BY INTERNATIONAL CONDITIONS OF LOADING AND TRANSPORTATION (ICLT) FOR TRANSPORT ON PALETTES.**

## HANDLING / MANIPULACE

Packages of all kind are suitable for handling using a pallet lifter and pallet hook. Some of the package types described above may be handled by suspending them on a crane ropes.



**Pallet lifter**



**Pallet hook**



**Examples of lashing and lifting the switchboard cabinets**



**Lifting the switchgear cabinets by rope**

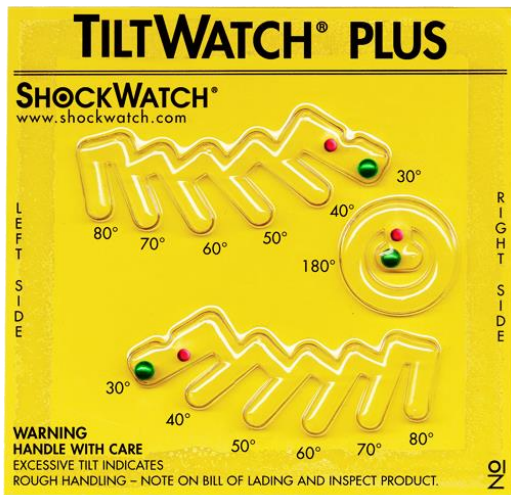
## TRANSPORTATION

Switchgear cabinets in standard packaging can be forwarded by lifting them on covered lorry trucks or in containers. During the transport the load has to be secured with suitable slings. When fixing the equipment with load securing straps it is not allowed to put any of the cabinets under load! The straps must be lead outside of the cabinet and fixed to the whole packaging, only (palette, box, crate). It is not allowed to tilt the package or turn it round in any way! In case of falling the package down from the transport means, it is highly probable that the cabinet sustained damage and in such a case it will be necessary to take it back to the manufacturer for professional repair.



## SAFETY TRANSPORT

For safety transport of our goods, all parts of shipments are equipped with safety indicators of impact and tilt. You can be sure that all supplied devices are in 100% state of quality. Please handle with care and see indicators after you receive the goods.



Manufactured and supplied by:

**IVEP, a.s.**  
**Vídeňská 117a, 619 00 Brno, Czech Republic**

Tel.: +420 547136 654 e-mail: [marketing@ivep.cz](mailto:marketing@ivep.cz)  
Fax: +420 547136 402 [http:// www.ivep.cz](http://www.ivep.cz)

